

TRITEC

ENERGY FOR A BETTER WORLD

TRI-STAND INSERTION PROFILES

Versatile solutions for PV projects.

- 
- simple
 - quick
 - efficient

The main advantages:

- Profiles are floating, therefore no thermal separation necessary
- No stresses on the module or rail system due to thermal expansion
- Simple, quick and efficient installation
- Optimum load distribution and stability
- Suitable for all common framed solar modules

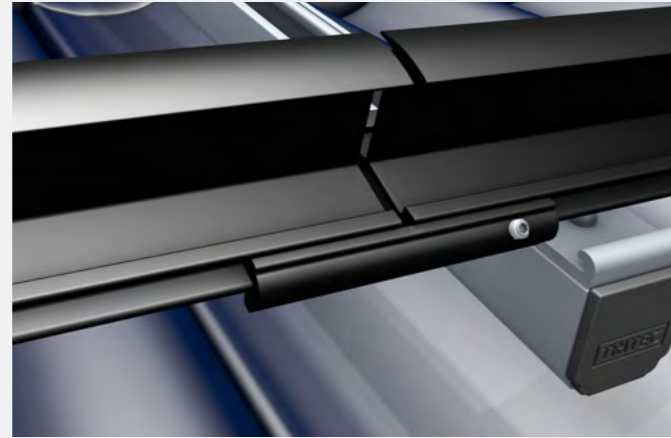
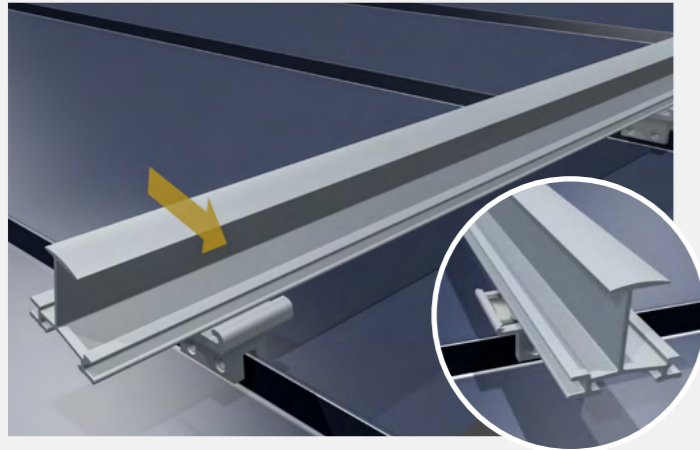
www.tritec-energy.com

TRI-STAND INSERTION PROFILES

Versatile solutions and technical excellence for PV projects

TRI-STAND insert profiles are specially designed to meet the highest requirements of your photovoltaic projects. They are characterized by excellent corrosion resistance and remarkable durability. High-quality material properties ensure long-term investment security and reliable performance over the entire service life of the application.

Advantages of TRI-STAND insertion profiles

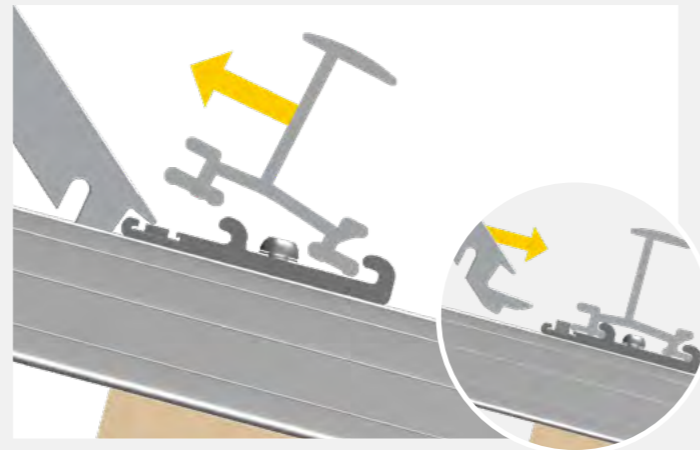
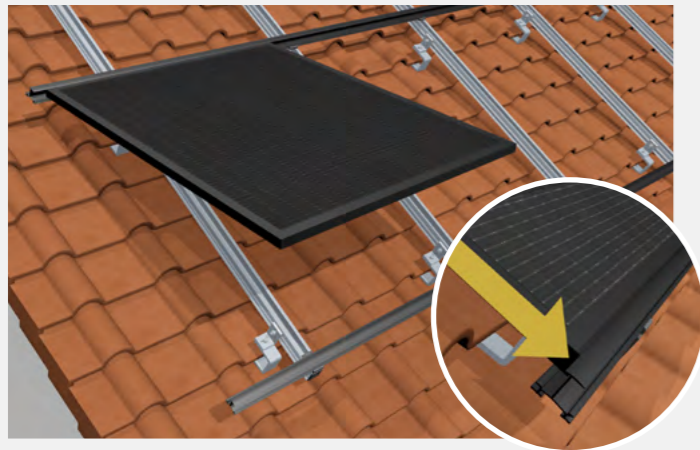


Quick installation

The insertion profiles are clicked into the SafeClick and are floatingly connected to the roof. Damage to the roof and module caused by thermal expansion are thus avoided.

Simple connection

The insertion profiles are connected in the centre using the TS-C connectors and fixed in place with a grub screw to allow thermal expansion of the TS profiles.



Secure installation

The modules are inserted into the insertion profiles to save time and are held in place thanks to their own weight - there is no need for additional fastening.

Simple removal

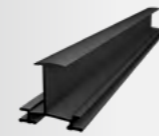
If necessary, the TRI-STAND insert profiles can be easily removed by pressing down the spring on the SafeClick using the TS bending tool+.

THE PROFIL VARIANTS

Flexibility for a wide range of requirements

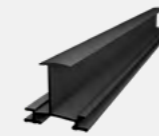
Optimally tailored to your requirements: With TRITEC, you benefit from a comprehensive product range that has been specially developed for different snow and wind load zones**. The profiles and variants marked with * are available in different lengths on request. The TRI-STAND insert profiles are also available in the colours 'black' and 'blank' (aluminium silver).

➔ **TRI-STAND insertion profile**
The insertion profile for standardised snow and wind power zones.



TRI-STAND insertion profile, black
Standard
• variants: TS-30/32/35/38/40
• available in different lengths*

➔ **TRI-STAND insertion profile light**
The insertion profile for low snow and wind force zones.

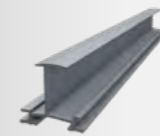


TRI-STAND insertion profile light, black
Standard
• variants: TS-30/32/35/38/40
• available in different lengths*

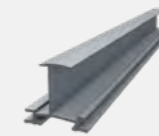
➔ **TRI-STAND insertion profile alpine**
The insertion profile for elevated snow and wind force zones.



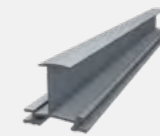
TRI-STAND insertion profile alpine, black
Standard
• variants: TS-30/32/35/38/40
• available in different lengths*



TRI-STAND insertion profile, blank
Standard
• variants: TS-30/32/35/38/40
• available in different lengths*



TRI-STAND insertion profile light, blank
Standard
• variants: TS-30/32/35/38/40
• available in different lengths*



TRI-STAND insertion profile alpine, blank
Standard
• variants: TS-30/32/35/38/40
• available in different lengths*

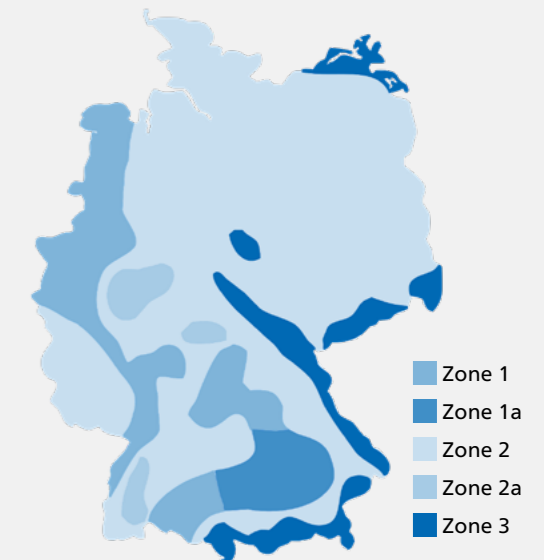
➔ **TRI-STAND end profile**
The insertion profile provides an aesthetic finish.



TRI-STAND end profile, black
Optional
• variants: TS-30/35
• available in different lengths*



TRI-STAND end profile, blank
Optional
• variants: TS-30/35
• available in different lengths*

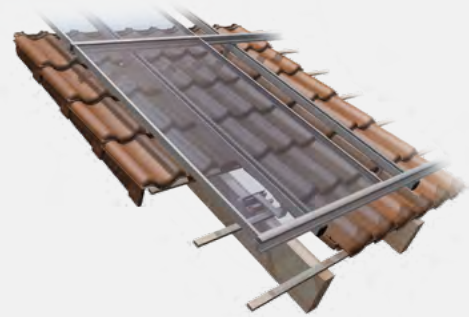


* Information on lengths and article numbers on request.
** The wind and snow load zone according to which the system is designed can be determined for each location.

LEARN MORE

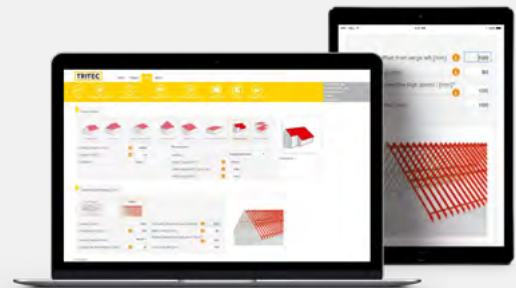
Videos, planning and contact

TRITEC



Simply scan the QR code or visit the following link for more information about our PV mounting systems.

<https://www.tritec-energy.com/en/pv-mounting-systems/>



Just scan the QR code or visit the following link to watch the training video on our TRI-DESIGN planning software.

<https://www.youtube.com/watch?v=S9WGviC8x2I>

The optimal mounting solution for every roof

TRITEC mounting systems combine nearly 40 years of photovoltaic experience. Our own products TRI-STAND, TRI-ROOF+, TRI-CLIP Ready, TRI-FLAT Easyspeed and Easygreen offer optimum PV mounting solutions for the various requirements of different roof types and alignments. We attach great importance to the high-quality processing of the components as well as to the durability of the substructure.

For further information on our products and services, please visit our website at www.tritec-energy.com or our online shop at shop.tritec-energy.com.

You can also contact our experts directly at any time, who will be happy to answer any questions you may have.

Contact us at
info@tritec-energy.com

Website & online shop
www.tritec-energy.com
shop.tritec-energy.com