

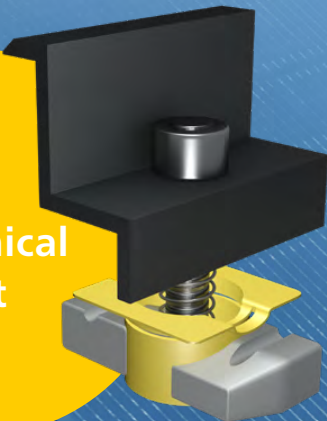
TRITEC

ENERGY FOR A BETTER WORLD

TRI-CLIP

The economical clamping system
for PV systems on tiled roofs.

- simple
- economical
- efficient



The main advantages:

- Cost-effective, economical on-roof system
- Statically tested for wind and snow loads
- Suitable for all common framed solar modules

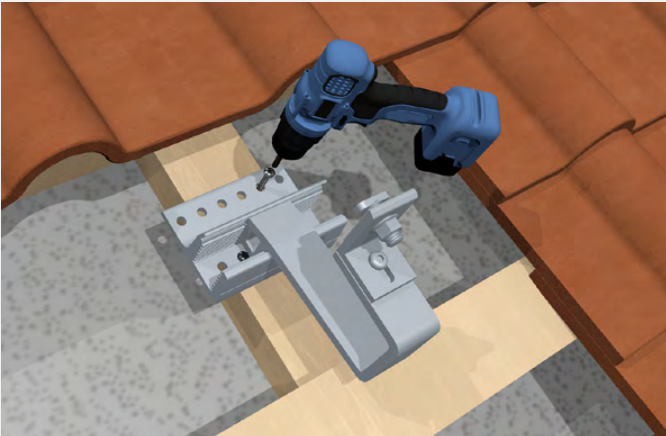
www.tritec-energy.com

TRI-CLIP

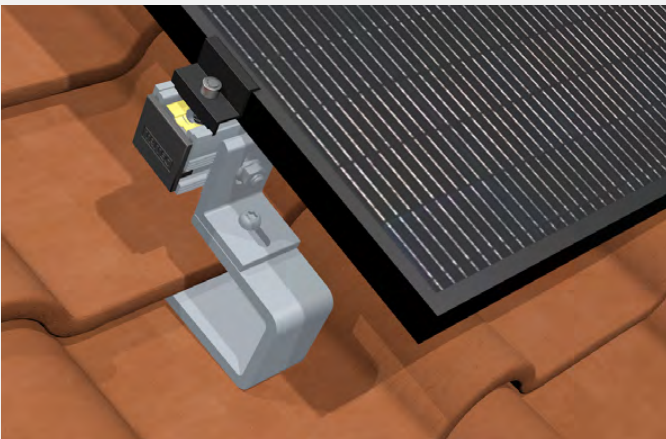
Classic mounting system at a low price

Realize your projects enormously cost-efficient: Thanks to smart planning software and reliable components, the on-roof clamping system TRI-CLIP is safely installed on the tiled roof. The PV clamping system is the economical and safe solution for many applications - from single-family homes to large commercial PV systems.

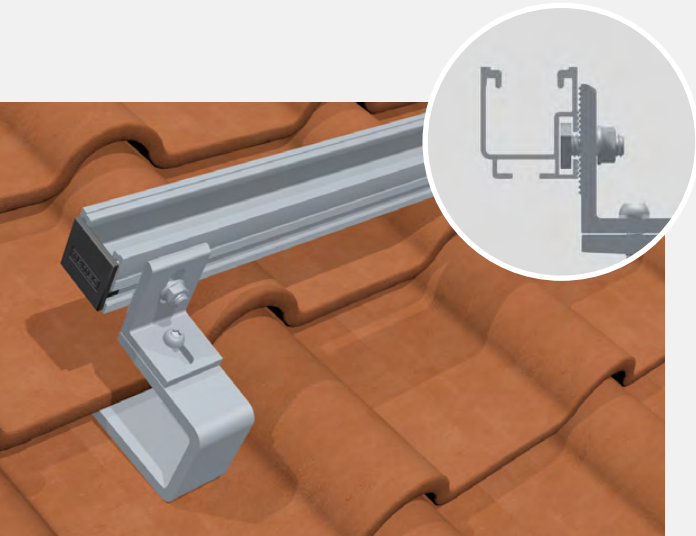
TRI-CLIP is installed so easily



1. Mounting the roof hook
After checking the substructure of the roof for its point load bearing capacity, the roof hooks are mounted according to the design plan.



3. Fix modules with TRI-CLIP
The end and middle clamps are attached and tightened to profiles and modules according to the design plan.



2. Mounting the base profile (UP-X)
The pre-assembled profiles are then securely installed on the roof hooks with the M10 hammerhead screw.

THE SYSTEM COMPONENTS

Easy assembly with high quality components

With TRITEC you have the choice: Some components for TRI-CLIP are available in the color selection „black“ and „blank“ (aluminum silver). Completely tailored to your needs: The profiles and variants marked with * are available in different lengths on request.

Colour key: ● black | ● blank



TRI-STAND
universal profile UP-X 3,70 m

Standard

- black, item no.: 1503404
- blank, item no.: 1503352
- other lengths on request*



TRI-STAND
universal profile connector UP-CX

Standard

- pre-assembled incl. hammer head bolt
- black, item no.: 1503404
- blank, item no.: 1503406



TRI-STAND end cap for UP-X profile

Accessories

- item no.: 1503185



TRI-STAND roof hook PRO

Standard

- item no.: 1503402



TRI-STAND roof hook PRO PLUS

Standard

- item no.: 1503403



TRI-CLIP middle clamp 30-40 mm

Standard

- black, item no.: 1503099
- blank, item no.: 1503081



TRI-CLIP end clamp

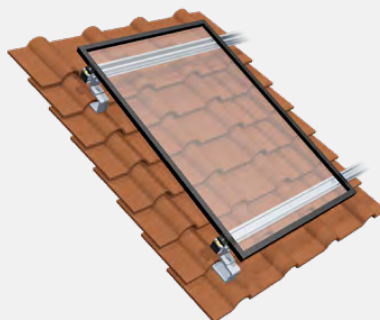
Standard

- black 30 mm, item no.: 1503143
- black 35 mm, item no.: 1503100
- black 40 mm, item no.: 1503101
- blank 30 mm, item no.: 1503142
- blank 35 mm, item no.: 1503082
- blank 40 mm, item no.: 1503083

* Information on lengths and part numbers on request.

LEARN MORE

Videos, planning and contact



Simply scan the QR code or visit the following link to get more information about TRI-CLIP clamping system.

www.tritec-energy.com/en/pv-mounting-systems/tri-clip/



Just scan the QR code or visit the following link to watch the training video on our TRI-DESIGN planning software.

<https://www.youtube.com/watch?v=S9WGviC8x2I>

The optimal mounting solution for every roof

TRITEC mounting systems combine over 30 years of photovoltaic experience. Our own products TRI-STAND, TRI-ROOF+, TRI-CLIP, TRI-FLAT Easyspeed and Easygreen offer optimum PV mounting solutions for the various requirements of different roof types and alignments. We attach great importance to the high-quality processing of the components as well as to the durability of the substructure.

For further information on our products and services, please visit our website at www.tritec-energy.com or our online shop at shop.tritec-energy.com.

You can also contact our experts directly at any time, who will be happy to answer any questions you may have.

Contact us at
info@tritec-energy.com

Website & online shop
www.tritec-energy.com
shop.tritec-energy.com