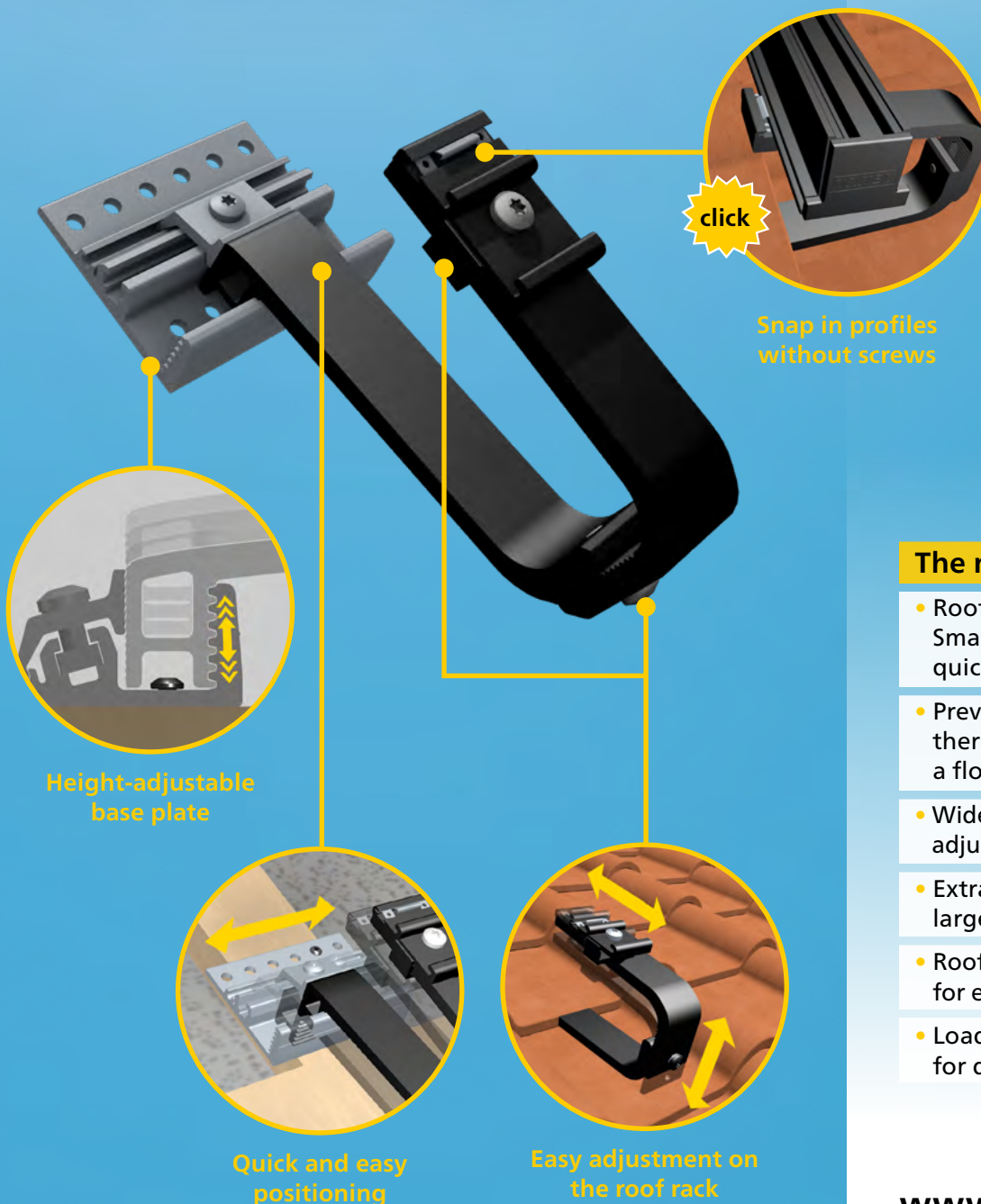


TRITEC

ENERGY FOR A BETTER WORLD

TRI-CLIP READY ROOF HOOK

PV roof hook for quick, floating
module array clamp installation.



The main advantages:

- Roof hooks with pre-installed SmartFix connectors for secure & quick attachment of the profiles
- Prevents damage caused by thermal expansion thanks to a floating module array
- Wide base plate with height adjustment in 5-mm increments
- Extra-long cantilever for large-format roof tiles
- Roof rack with two slotted holes for easy adjustment and securing
- Load capacity of up to 160 kg for demanding applications

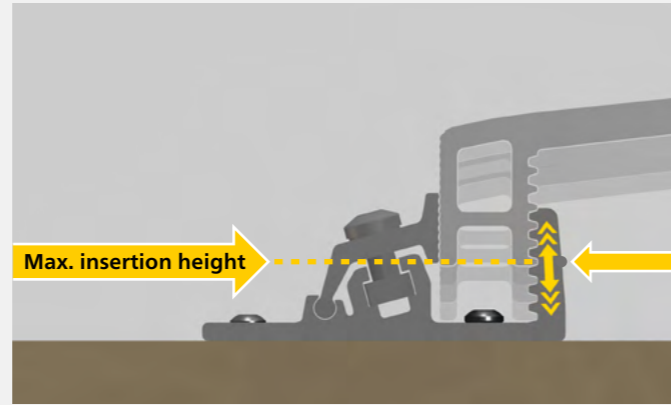
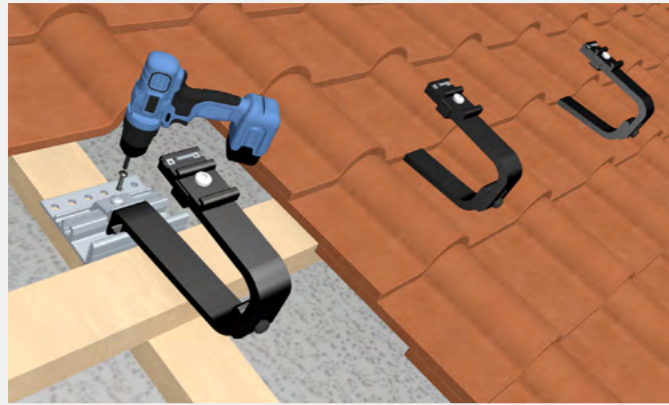
www.tritec-energy.com

ROOF HOOK FOR PITCHED ROOF

How to boost your efficiency with ease

The TRI-CLIP Ready roof hook with pre-assembled SmartFix connectors compensates for uneven roof surfaces and allows for quick, user-friendly installation of the profiles without the need for additional screw fastening. The wide base plate is height-adjustable in 5 mm increments to 25, 30, 35 and 40 mm. The extra-long cantilever arm is also suitable for large-format roof tiles. The roof hook bracket allows for simple and precise horizontal and vertical adjustment.

TRI-CLIP Ready roof hook – the smart solution for PV clamping systems

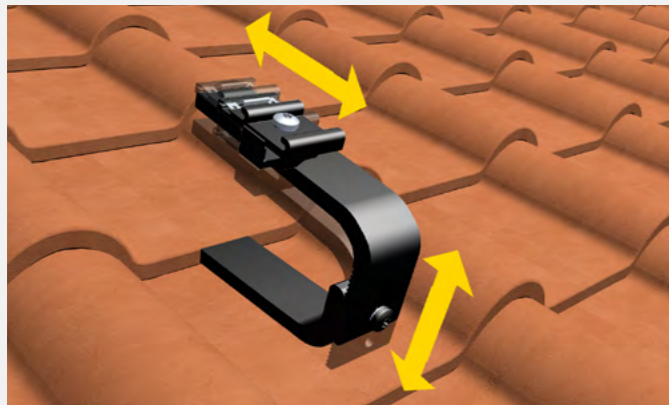


Positioning the base plate

With its wide base plate, the roof hook offers maximum flexibility when positioning it on the rafter.

Height-adjustable and adaptable

The height-adjustable base plate allows for precise adjustment in 5 mm increments to batten thicknesses of 25, 30, 35 and up to a maximum of 40 mm, ensuring optimal integration.



Easy adjustment

The roof bracket features two slotted holes, allowing for precise and straightforward adjustment in both the horizontal and vertical directions. This makes it easy to compensate for any unevenness in the roof. The bracket and SmartFix connector should be tightened to 15 Nm.

Click & Ready with the SmartFix connector

The profiles click securely and quickly into the Smart-Fix connectors on the roof bracket; no further screw fixing is required. The module panel on the profiles is securely guided within the roof bracket and is therefore mounted on a floating system.

THE SYSTEM COMPONENTS

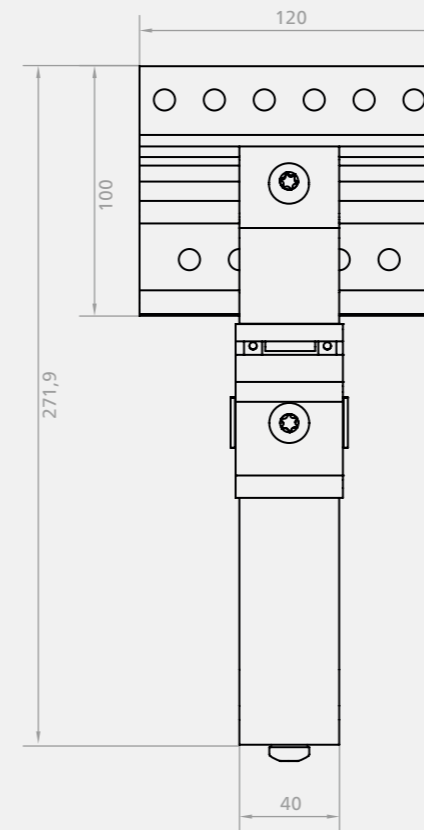
Quick installation with pre-assembled components

The roof hook, which comes pre-assembled with the SmartFix connector, allows the profiles to be installed quickly. The intelligent floating module mounting system prevents glass breakage caused by thermal expansion. The roof hook for the TRI-CLIP Ready clamping system is designed to support loads of up to 160 kg.

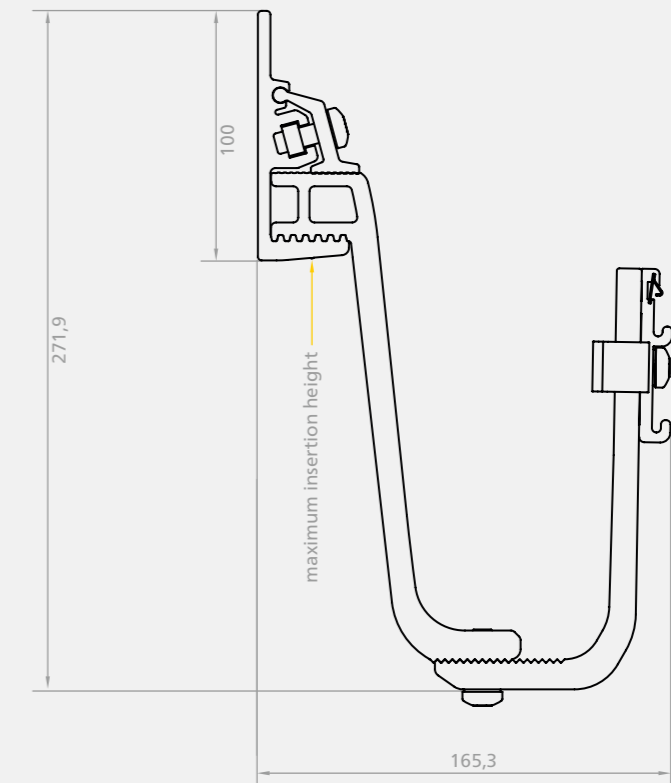
Colour key: ● black | ● blank



TRI-CLIP Ready roof hook supervision



TRI-CLIP Ready roof hook side view



LEARN MORE

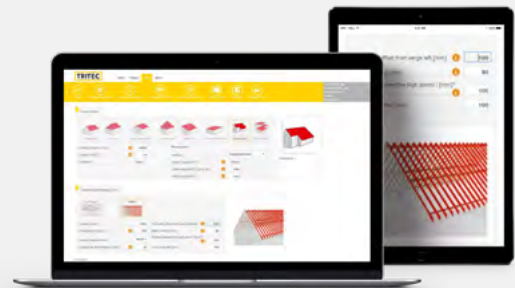
Videos, planning and contact

TRITEC



Simply scan the QR code or visit the following link for more information about the TRI-CLIP Ready roof hook.

<https://www.tritec-energy.com/en/pv-mounting-systems/roof-hooks-photovoltaics/>



Just scan the QR code or visit the following link to watch the training video on our TRI-DESIGN planning software.

<https://www.youtube.com/watch?v=S9WGVIC8x2I>

The optimal mounting solution for every roof

TRITEC mounting systems combine nearly 40 years of photovoltaic experience. Our own products TRI-STAND, TRI-ROOF+, TRI-CLIP Ready, TRI-FLAT Easyspeed and Easygreen offer optimum PV mounting solutions for the various requirements of different roof types and alignments. We attach great importance to the high-quality processing of the components as well as to the durability of the substructure.

For further information on our products and services, please visit our website at www.tritec-energy.com or our online shop at shop.tritec-energy.com.

You can also contact our experts directly at any time, who will be happy to answer any questions you may have.

Contact us at
info@tritec-energy.com

Website & online shop
www.tritec-energy.com
shop.tritec-energy.com